



#### For More Information

Wahpeton Reserve 94B  
P.O Box 2350  
Prince Albert, SK  
S6V 6Z1

Phone: 306-953-2498  
Fax: 306-953-2514  
Web:  
[www.pagc.sk.ca/spiritual-healing-lodge](http://www.pagc.sk.ca/spiritual-healing-lodge)

The Spiritual Healing Lodge is located  
8km East and 3km North from Prince  
Albert

## Prince Albert Grand Council

### SPIRITUAL HEALING LODGE



#### MISSION STATEMENT

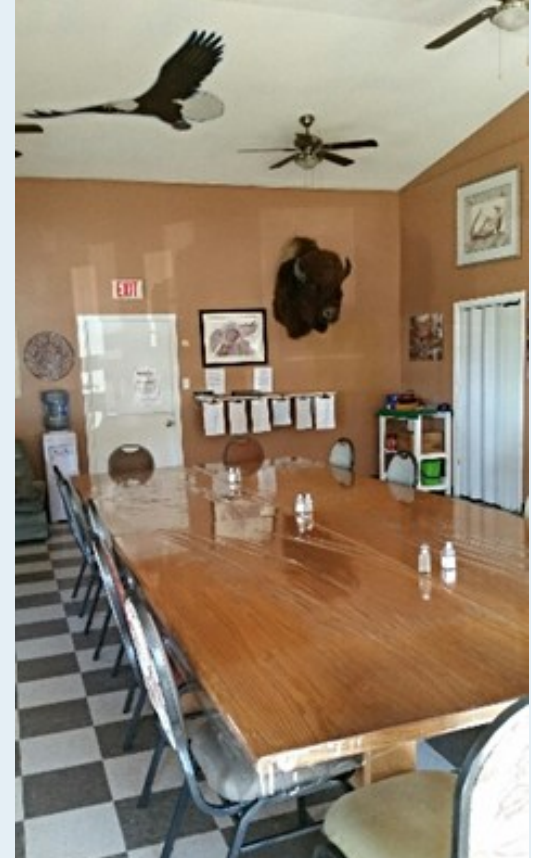
*The Healing Lodge provides our Relatives  
with a solid grounding in their culture,  
values and customs to balance their  
body, mind, spiritual and emotional  
needs. With guidance and assistance  
from our Elders and staff, our Relatives  
overcome conflict with the law by  
participating in ceremonies and  
developing skills for a healthy lifestyle.*

#### Teachings at the Lodge include:

- ◆ Spiritual & Cultural Teachings provided by Elders from the Plains Cree, Woodland Cree, Swampy Cree, Dakota and Dene tribes.
- ◆ Holistic Healing
- ◆ Individual and group counselling
- ◆ Addictions Counselling
- ◆ Healthy Family Living
- ◆ Community re-integration planning
- ◆ Education, training and employment information

#### Criteria for All applicants:

- ◇ You must be willing to continue your Healing journey.
- ◇ You must be willing to participate in all programs and activities the Lodge has to offer.
- ◇ You must be willing to learn and to respect the diversity of all tribal groups and teachings.
- ◇ Applicants must be prepared to live within the rules and regulations of the Spiritual Healing Lodge
- ◇ You must have an open mind.





## ABOUT US

Prince Albert Grand Council operates a 12 bed Spiritual Healing Lodge which houses Federal minimum security inmates and offenders.

Each cabin has six individual rooms with 2 shared washrooms.

*who can apply?*

*A) federal serving inmates who are currently not serving a sentence for one of the following offences:*

- *Prison breach or escape*
- *Outstanding charges*

*B) federal offenders who are focused and motivated to making change and prepared to follow their Healing Plan.*

## VISION STATEMENT

*Our vision at the Men's Spiritual Healing Lodge is to provide traditional teachings in a cultural environment to help support our Relatives on their healing journey.*



## Section 81

### APPLICATION PROCESS FOR SECTION 81

- \* serving federal inmates may apply under a section 81 agreement with Correctional Service Canada
- \* Have a healing plan in place.
- \* Must be minimum security or in the process.
- \* Must be committed to a spiritual way of living.
- \* Must be medically fit
- \* Must be drug free (some prescriptions acceptable)
- \* Must have full support of parole officer
- \* Must apply through your parole officer
- \* Must be interviewed by the Healing Lodge

You must have ETA status and UTA status or in the process of acquiring your UTA's.

How Long Can I Be There?

Approximately 18 months, depending on your circumstances.

A maximum of 2 years for those serving an indeterminate sentence.

## Section 84

### APPLICATION PROCESS FOR SECTION 84

- \* Have a healing plan in place.
- \* Must be committed to a spiritual way of living.
- \* Must have full support of parole officer
- \* Consultation for a Section 84 bed is conducted by the Parole office to the Healing Lodge. Speak to your Parole Officer for the process.

### OTHER INFORMATION FOR SEC 84

- ⇒ Access to all Healing Lodge programs.
- ⇒ Access to Healing Lodge Elders
- ⇒ Separate parolee Cabin
- ⇒ Access to the recreational room
- ⇒ Free shared laundry room
- ⇒ Transportation to Prince Albert to attend programs, work and school.
- ⇒ Parking
- ⇒ Cell phones permitted, when conditions permit
- ⇒ The Healing Lodge supports individuals in making a healthy positive lifestyle change

